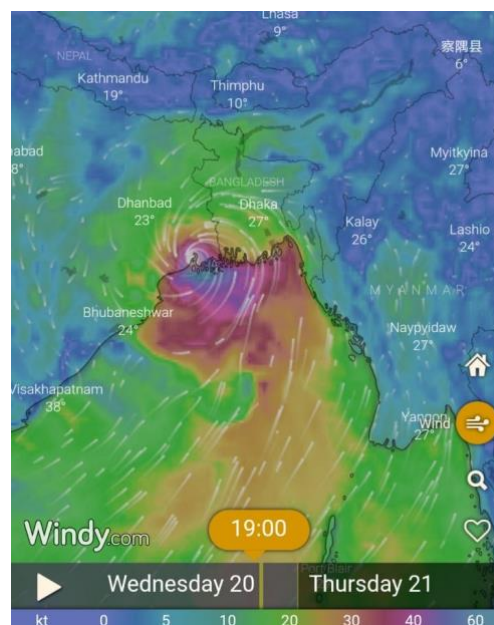


HIGHLIGHTS

- Cyclone AMPHAN hit Bangladesh on night from 20 to 21 May 2020 and moved over Satkhira district and adjoining area northwards and now lies over Jhenaidah. It is likely to move in a north-east direction further and weaken gradually. Fortunately, it was weaker than expected.
- Bangladesh GOs and NGOs are currently active in the field to help the affected people.
- 2.4 Million people have been taken to cyclone shelter and as much as possible maintained social distance for COVID-19.
- Large areas have been flooded in different places of south-west part of Bangladesh



Category 1

Cyclone landfall

160

km/h Wind Speed

Signal 10

South-West part of Bangladesh

2.4

Million people are taken to cyclone shelter

8

People died in five district

7

District electricity cut down due cyclone

000,000

Most compelling Statistic 7 goes here

SITUATION OVERVIEW

Information on the Emergency

Super Cyclonic Storm Amphan is currently weakening and moving to north-east part of Bangladesh.

The country never saw an evacuation of this scale during any natural disaster in the past. 2.4 Million evacuated into 15,000 Shelters in just 2 days. The districts near the Sundarbans-Satkhira, Bagerhat and Khulna have been mostly affected by the cyclone.

Amphan, formed in the Bay of Bengal on Saturday, turned into a super cyclone within just 18 hours on Monday, but it gradually weakened and become an extremely severe cyclone.

It made landfall with a wind speed of 160 kmph and caused tidal surges up to nine feet in some coastal areas. Hundreds of villages were inundated in Bhola, Patuakhali, Barguna, Khulna, Bagerhat and Satkhira. And tidal surges battered the char areas in Barguna, Patuakhali, Bhola, Barishal and Lazmipur.

Almost all the coastal districts experienced rain and strong wind since early yesterday due to the influence of Amphan. It started raining heavily in the evening. Dhaka and its adjacent districts also experienced gusty wind and

rain since yesterday afternoon.

Many low-lying areas of Barishal, Chattogram and Khulna went under water due to tidal surges. In some areas, strong rushing water breached protection embankments.

Different areas in Dacope and Koira upazilas of Khulna were also flooded as Rupsha, Shibshar and Pashur rivers were flowing above the danger level.

ADRA existing Project Staff in Khulna reported that people in the district experiencing power cuts and disruption of mobile network since yesterday evening.

People Affected

- Total 10 people died in different districts of Bangladesh.
- No numbers of injured reported yet.

Humanitarian Situation

- More than **83,560 houses** were destroyed partially and fully in south-southwest part of Bangladesh.
- At least **400,000 people** under 68 unions have been affected in nine Upazila of the district

- **Thousands** of shrimp enclosures have been washed away, while numerous thatched house, trees, electricity and telephone poles, dykes and croplands were damaged and many villages were submerged by the tidal surge
- 100s of villages were inundated due to tidal surges and embankment breaks south-southwest part of Bangladesh.
- Many crops, vegetable garden, roads have been destroyed
- Some 1,100 kilometres of road and 200 bridges and culverts under the local government have been damaged. The Water Development Board reported that 150 kilometres of embankments were damaged while another 84 dams developed cracks
- 1000s of animals drowned

<https://www.dhakatribune.com/bangladesh/nation/2020/05/21/cyclone-amphan-83-000-homes-destroyed-in-khulna>

<https://www.dhakatribune.com/bangladesh/crisis/2020/05/21/govt-estimated-damages-from-amphan-worth-1-100-crore>

Gaps in Humanitarian Assistance

Food, Water and Shelter in the affected area.

ADRA's RESPONSE

Needs Assessment

ADRA Bangladesh existing project staff visited affected areas in Dacope, Khulna today morning for the rapid needs assessment. In Khulna District Dacope, Koyra and Shayamnagor Upazila (Sub-district) are the most affected. 6 embankment points were broken and many villages have been flooded and many people lost their houses, vegetable gardens and fish ponds. Watermelon is an economic crop in this area and it has been completely destroyed.

Also ADRA Bangladesh collected information from Satkhira local SDA Church and news about Satkhira situation because most of the church members have been affected. In this region 23 embankments broke and this caused flooding in over 50 villages. About 1000 house are destroyed partially and fully.

Main Findings:

The main findings are: in addition to losing jobs because of COVID 19 lockdown, now people lost also their homes, livestock and crops. Main need is food, fresh water and shelter.

Methodology: Through directly and indirectly (news and mobile communication) Observation in the affected areas.

Location: Khulna and Satkhira

Date: 21/05/2020

ADRA's Response Activities

ADRA Bangladesh closely monitored the Cyclone Amphan situation.

The existing project of ADRA Bangladesh provided dry and cooked food to over 300 people who took shelter in four Cyclone Shelter.

Yesterday ADRA BD Ward Disaster Management Committee members and staffs helped to evacuate people to four cyclone shelters and prepared separate rooms for males and females. Also tried to keep social distance for COVID-19 situation. ADRA BD team members also help to the community to repair the embankment.

Funding Opportunities

Fund opportunities from ADRA International \$10,000 and ADRA ARO \$2,500

RESPONSE COORDINATION

Coordination with other Organizations

ADRA Bangladesh will coordinate with NGOs, Government, Food security cluster, Shelter cluster and nearest Adventist churches.

Cluster Meetings

ADRA Bangladesh will attend in the Food Security and Shelter cluster meetings if needed for this particular response.

CONSTRAINTS

Security Constraints

ADRA Bangladesh will follow safety and security procedures, to avoid unnecessary risks.

Other Constraints

Challenges:

- NGO Bureau approval can delay the implementation.
- Road Communication problem
- Transportation restriction
- Distribution problem due to COVID-19 Situation

Mitigation:

- ADRA Bangladesh will start all the process like beneficiary selection, inform local government and procurement process before getting approval from the NGO Bureau.
- If there is any road communication problem, then ADRA Bangladesh will take alternative communication way.
- ADRA Bangladesh will take local government written permission to access in the road.

- ADRA Bangladesh will follow safety instruction during distribution and use PPE to protect from the COVID-19 virus.

PUBLIC RELATIONS

Media

All the photos and news articles will be shared by ADRA BD Facebook, Specific WhatsApp group “Cyclone Amphan” and also in the SharePoint.

Facebook link: <https://www.facebook.com/adrabangladesh>

Quotes

N/A

The next SitRep will be circulated on:

May 23, 2020.

See Pictures at the end of the Document

CONTACT INFORMATION

COUNTRY DIRECTOR

Vitalie Zegera

Email: countrydirector@adrabangladesh.org

Skype: vitaliezgh

Mobile: +8801711549612

Office: N/A

Physical Address:

REPORT PREPARED BY

Victor Boidya

Email: victor@adrabd.org

Skype: victor.boidya1

Mobile: +8801732429347

Office: N/A

Physical Address: 149 Shah Ali Bagh, Mirpur-1, Dhaka-1216, Bangladesh

EMERGENCY RESPONSE COORDINATOR (ERC)

Victor Boidya

Email: victor@adrabd.org

Skype: victor.boidya1

Mobile: +8801732429347

Office: N/A

Physical Address: 149 Shah Ali Bagh, Mirpur-1, Dhaka-1216,
Bangladesh

ADRA INTERNATIONAL CONTACT

Elizabeth Tomenko

Email: elizabeth.tomenko@adra.org

Skype: etomenko.adra

Mobile: +1-240-463-2480

Office: +1-301-680-5146

Physical Address: 12501 Old Columbia Pike Silver Spring, MD, USA,
20904

REGIONAL EMERGENCY COORDINATOR (REC)

Prabhook Bandaratileke

Email: probhook@adraasia.org

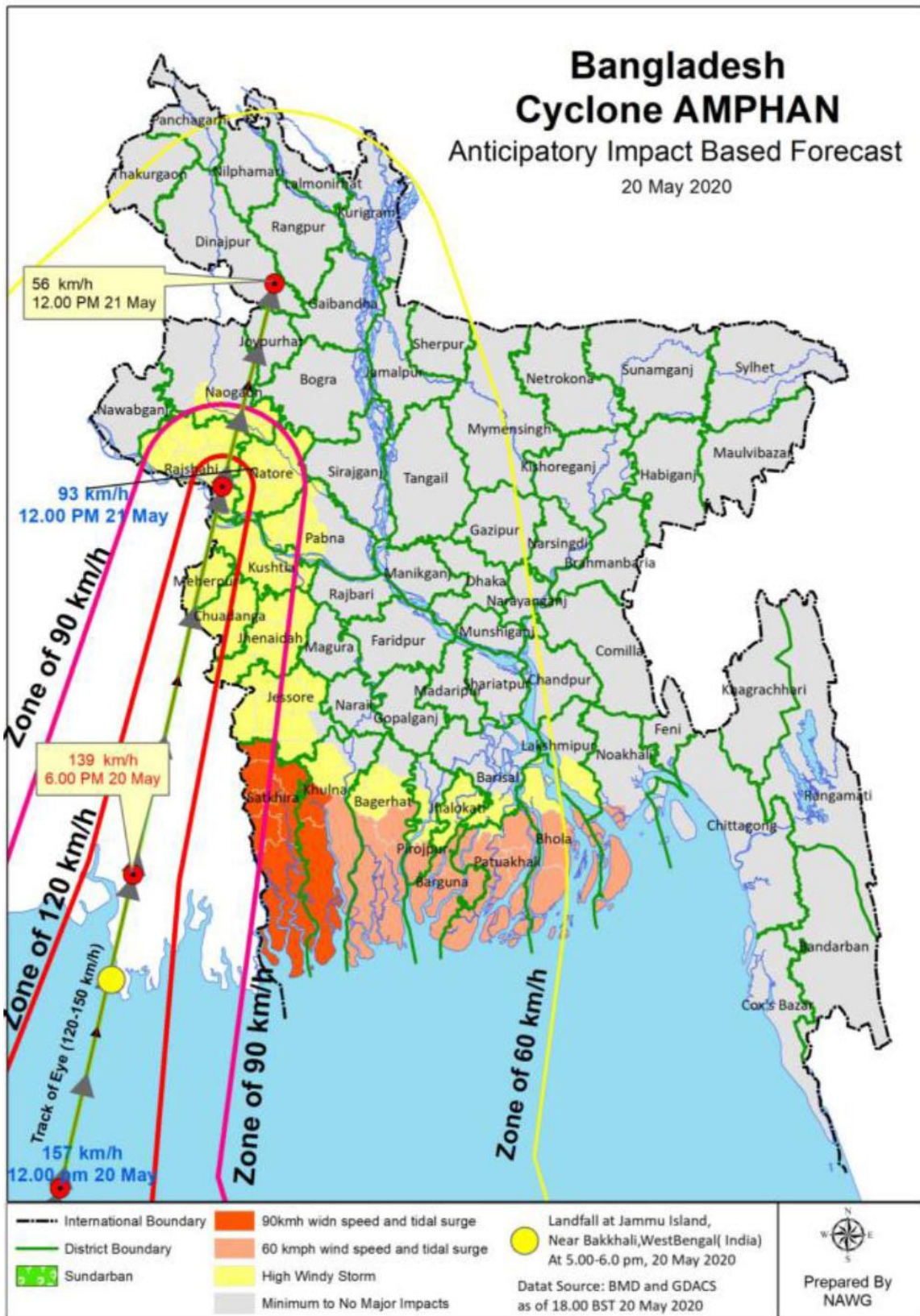
Skype: prabhook

Mobile: +94773207963

Office: N/A

Physical Address:

DETAILED MAPS















(not ADRA Picture)



(not ADRA Picture)



(not ADRA Picture)



(not ADRA Picture)